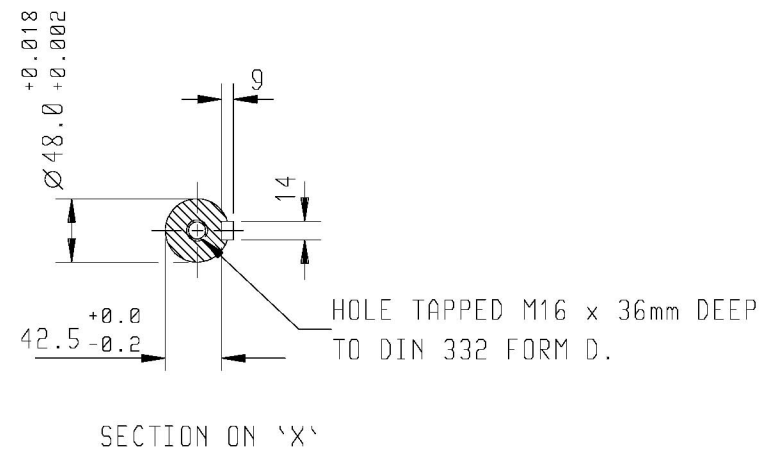
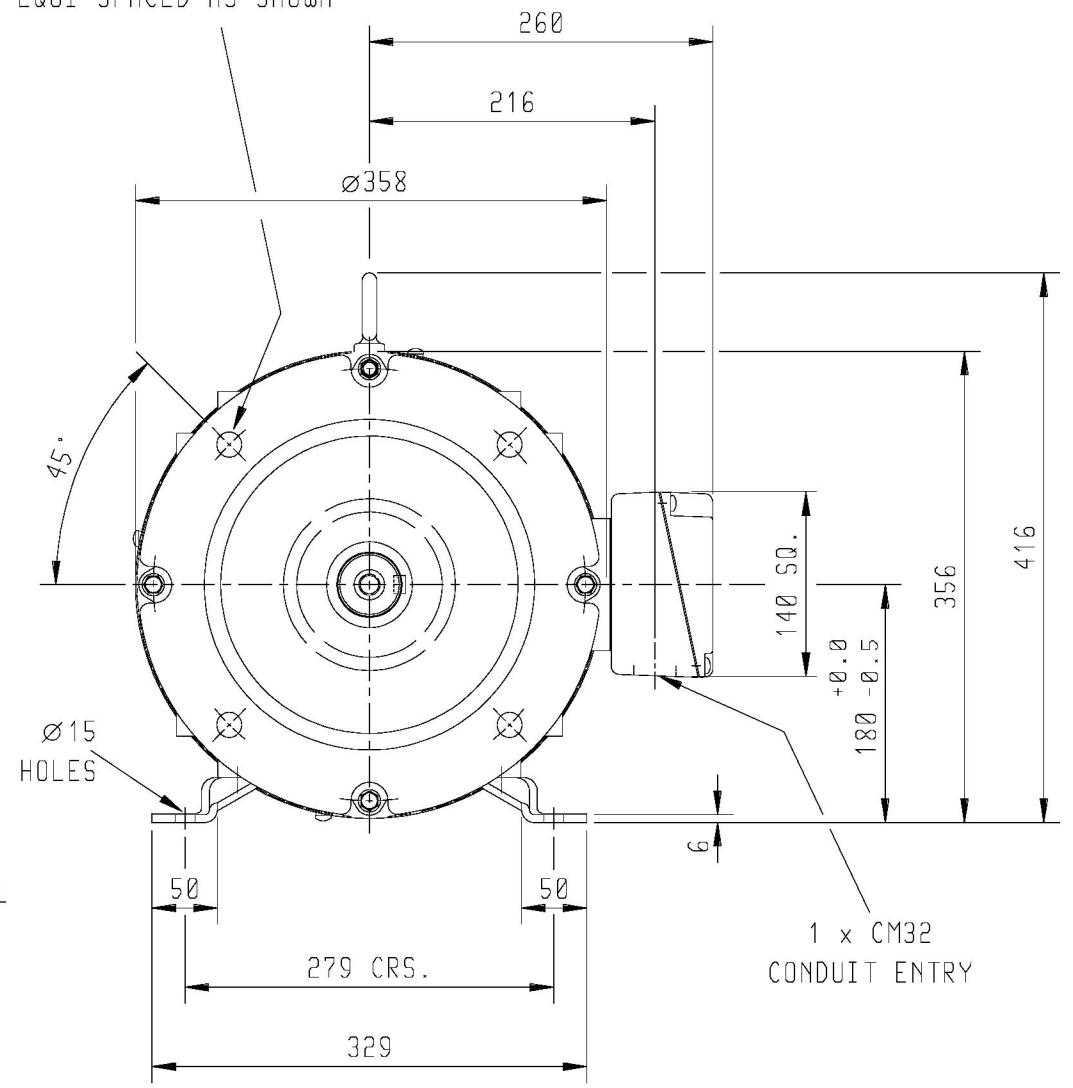
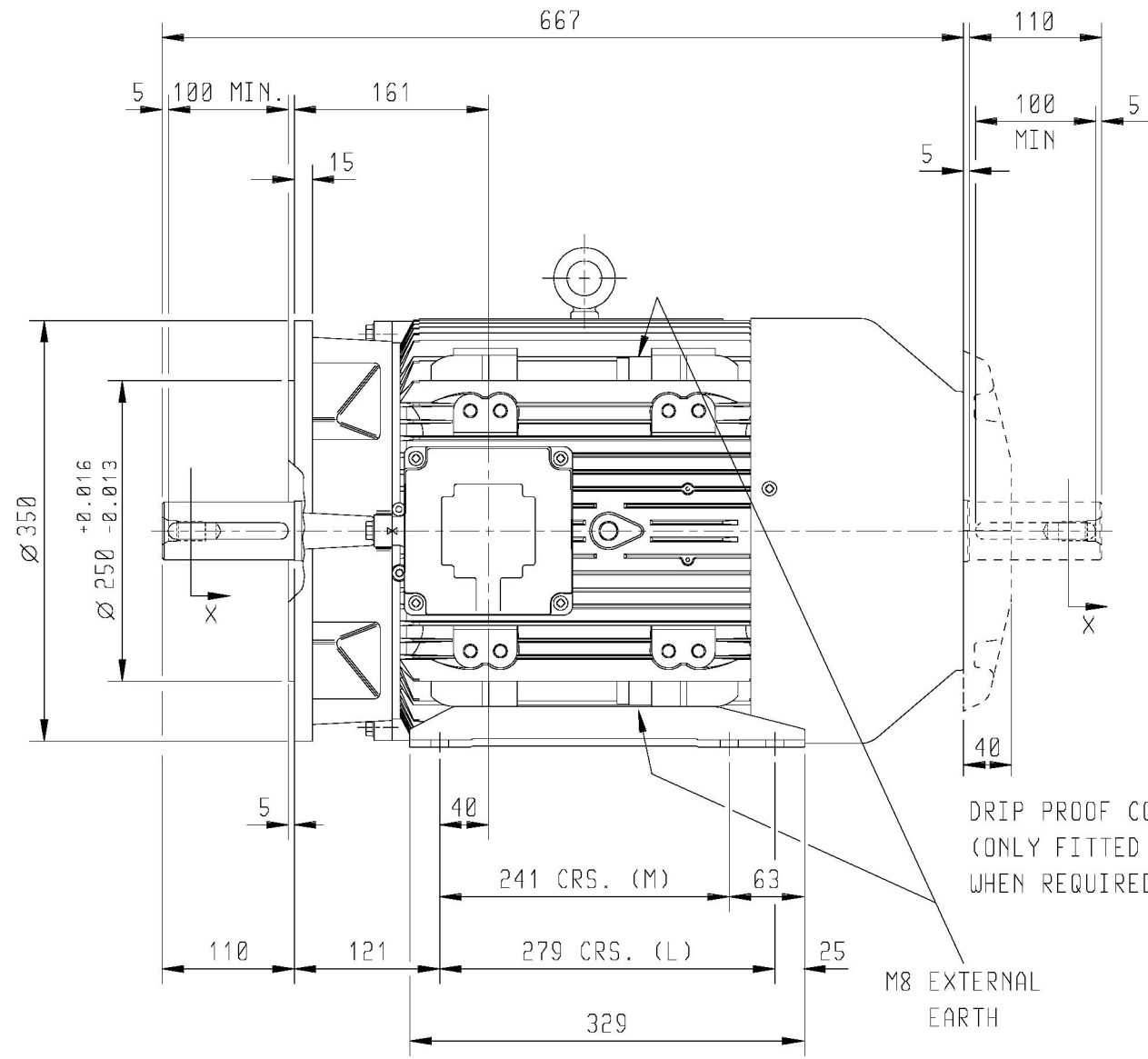


DRG. No.
 DRG. REF.

4 HOLES DRILLED $\varnothing 18.5$
 ON A 300 P.C.D.
 EQUI-SPACED AS SHOWN



DRIP PROOF COWL
 (ONLY FITTED
 WHEN REQUIRED)

M8 EXTERNAL
 EARTH

DRAIN HOLES:- WHEN TERMINAL BOX IS MOVED FROM STANDARD POSITION
 THEY WILL NEED TO BE PLUGGED AND RE-LOCATED ELSEWHERE - IF REQUIRED

TERMINAL BOX POSITION : - CAN BE ARRANGED AT EITHER 9, 12 OR 3 O'CLOCK BY MOVING FEET.
 STANDARD TERMINAL BOX POSITION IS 3 O'CLOCK AS SHOWN.

CONDUIT ENTRIES:- TERMINAL BOX CAN BE ROTATED AT 90° INTERVALS
 (CONDUIT ENTRY POSITION SHOWN FOR ILLUSTRATION ONLY).

CUSTOMER		
ORDER No.		
PART No.		
OUR ORDER No.		
FRAME SIZE		
KW.	DE.	RPM.
Hz	DE.	PHASE
VOLTS	DE.	POLES
BRGS.	DE.	NDE.
MOTOR NETT WT.		Kg.
SPECIAL REMARKS		

ALL DIMENSIONS IN MILLIMETRES.



**BROOK
 CROMPTON**

SHEET SIZE A3	TITLE	OUTLINE DIMENSION DRAWING W ALUMINIUM TOTALLY ENCLOSED FAN COOLED 180M/L FRAME FOOT & 'D' FLANGE MOUNTED MOTOR
	DRAWN	
	CHECKED	
	SCALE	1 : 6

NAME	DATE	DRG. No.
		DRG. REF.
REVISION:		DATE